



## Getting More Out of Your Phone

### **Modem Link**

Using Modem Link you can use your phone as an external modem for another device (eg. PDA or computer). Modem Link allows you to use a USB connection.

#### **Step 1: To set up a USB modem connection**

1. Make sure that your phone is not connected to another computer or device (eg. PDA).
2. On the Home Screen, select Programs, select More, select More again, select Accessories, and then press Action.
3. Select Modem Link and press Action.
4. Under Connection, select USB by pressing the right or left directional keypad outside of the Action button.
5. Press Menu, select Activate and then press Action.  
Note: Do NOT press Done on the left soft menu key. Pressing Done will deactivate the current connection.

#### **Step 2: Obtaining the MPx200 Wireless USB Modem Driver for your computer**

1. Connect your MPx200 phone to the computer via the USB cable.
2. Upon connecting the MPx200 to your computer, the computer will prompt you for the MPx200 Wireless USB Modem driver with a 'New Hardware Wizard'. See Step 3 below for further instructions. Please note that if an ActiveSync session initiates during this process you should shut down the ActiveSync session and verify that your Modem Link session is still active (as described in Step 1 above).
3. You can download the USB driver from the following Motorola website ([www.motorola.com/phones/mpx200](http://www.motorola.com/phones/mpx200)). See Step 3 below for the proper install instructions for installing the.

#### **Step 3: To Manually Install the Device Driver**

1. Click Next from the opening screen of the install wizard which states "Welcome to the Found New Hardware Wizard".
2. Click on "Search for a suitable driver for my device (recommended)."
3. Browse to the folder in which you downloaded the driver file from the Motorola website ([www.motorola.com/phones/mpx200](http://www.motorola.com/phones/mpx200)) listed above.
4. Click Next to allow your computer to automatically search and download the driver file.
5. Click "Finish".
6. After installing the modem, disconnect your handset from the computer, re-activate the USB modem in your handset and reconnect it to the computer.



7. "Smartphone 2002 Wireless USB Modem" should now be properly listed in the Device Manager window.

#### **Step 4: To Query the Modem**

A modem query is necessary to establish a PC and modem connection.

Note: If the PC and modem connection is not established in approximately 30 seconds, ActiveSync will take over the USB port.

1. Click on Start > Settings > Control Panel > System > Hardware > Device Manger > Modems.

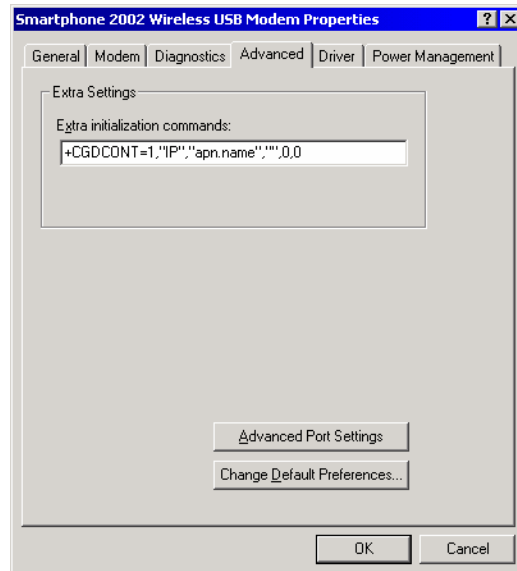


2. Double click on "Smartphone 2002 Wireless USB Modem".
3. Select the "Diagnostics" tab and click on "Query Modem".  
The PC sends AT commands and if the modem replies back without an error then the modem is properly installed.

#### **Step 5: To Add an Initialization String**

Add an extra initialization string to Modem Properties. Change the APN as needed. An extra initialization string is needed on your MPx200 phone for setting up the GPRS server configuration. Please contact your wireless service provider for the APN name, username and password.

1. After querying the modem (from Step 4 above), click the "Advanced" tab in the Modem Properties dialog box.
2. Type in your initialization string and change the APN name as needed.
3. For AT&T Wireless' initialization string please use the following: `+CGDCONT=1,"IP","","",0,0`



## Step 6: To Use MPx Wireless USB Modem for Cable GPRS

1. Activate USB modem on handset (unless already active). Connect USB data cable to handset and PC (unless already connected).
2. Establish PC and modem connection (modem query or hyper terminal AT commands)
3. Add dial-up connection using wireless USB modem

### To Add new Dial-up Connection:

1. From **Control Panel** select **Network and Dial-up Connection**
2. Double click **Make New Connection** then **Next**
3. Select radio button **Dial-up to Internet** then **Next**
4. From **Internet Connection Wizard** select radio button **Internet Connection Manually** then **Next**
5. Select radio button **connect through phone line and modem**
6. From modem selection, scroll down to **Smartphone 2002 Wireless USB Modem** then **Next**
7. Under Telephone Number space type **\*99#** and **uncheck area codes and dialing rules** then **Next**
8. Fill in **user name and password** as needed
9. Type connection name (ie Smartphone USB Cable GPRS) and next
10. Select **No** then **Next**
11. Unselect the "To connect to the internet immediately" option.
12. Click **Finish**

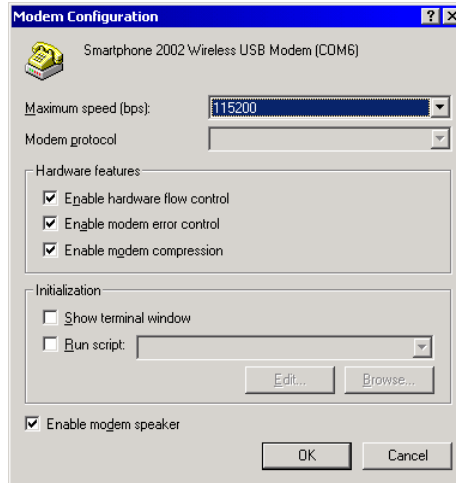
4. Ensure Smartphone 2002 USB Wireless Modem is selected and **hardware features** are properly configured before dialing:

To double check settings:

1. Open the newly created dial-up connection
2. Click on **Properties**, verify Smartphone 2002 USB Wireless Modem is selected



3. Click **Configure** and ensure all **Hardware Feature** is selected as shown below. Make sure that the maximum speed is set for 115,200 bps.



4. Click **Ok** then **Ok**

5. Click **Dial**.

6. After clicking **Dial** you should see **Opening - Dialing - Verifying User Name and Password --- Registering your computer on the Network**. Once Dial up **Dialog window** shrinks down to your icon tray then you are GPRS connected - Congratulations!

### **Step 7: Shutting Down the Modem Connection**

When you wish to shut down the modem connection you will need to do the following:

1. While in Modem Link menu item, press Menu, select Deactivate and then press Action.

Note: Deactivate the Modem Link when you are finished using it in order to avoid potential problems when using ActiveSync in the same session.